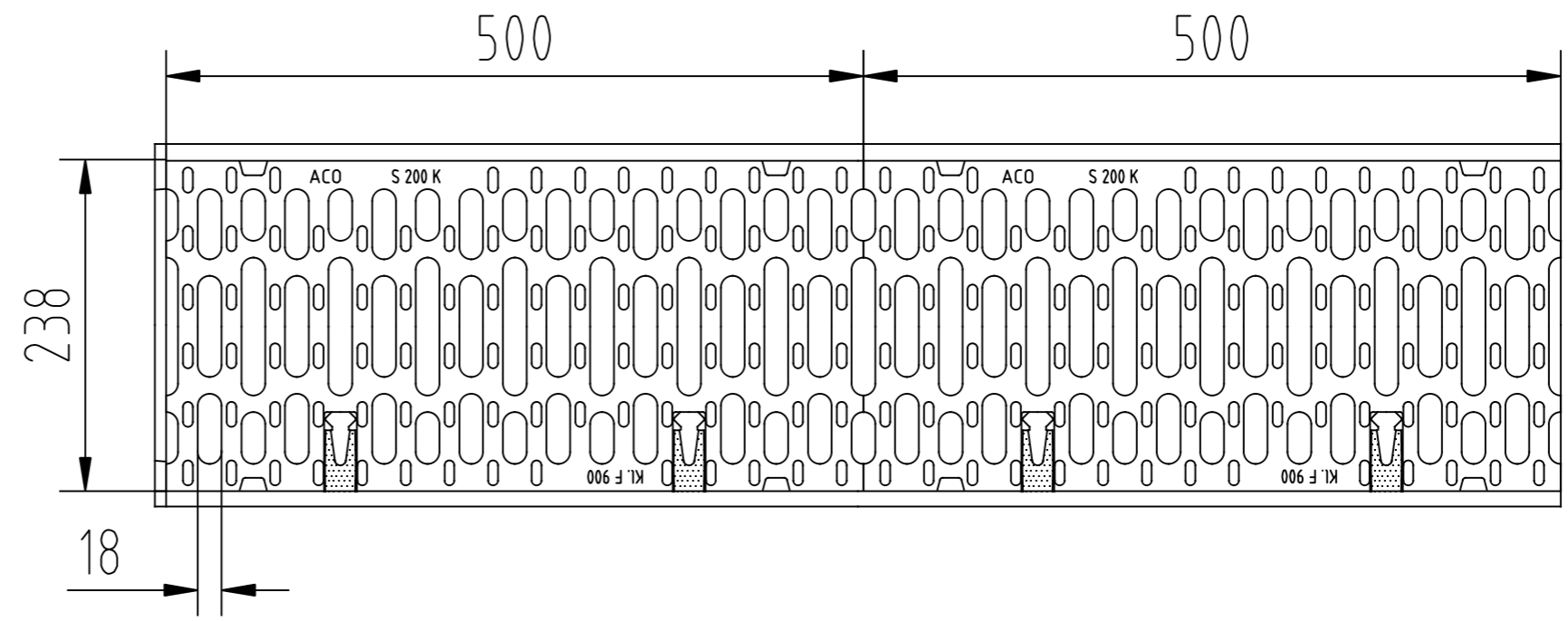
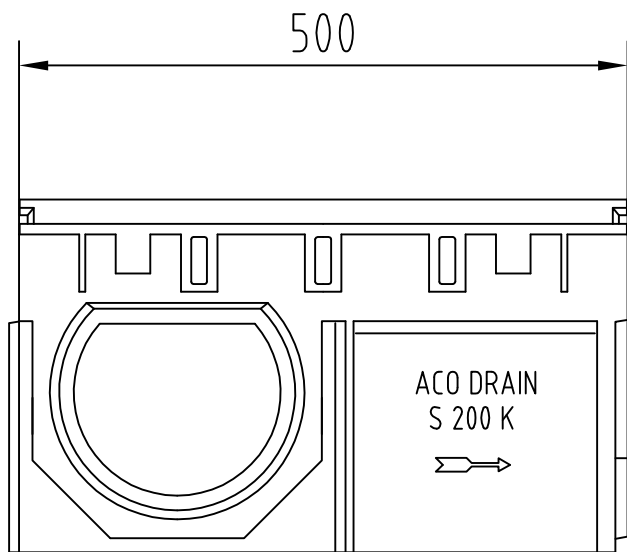
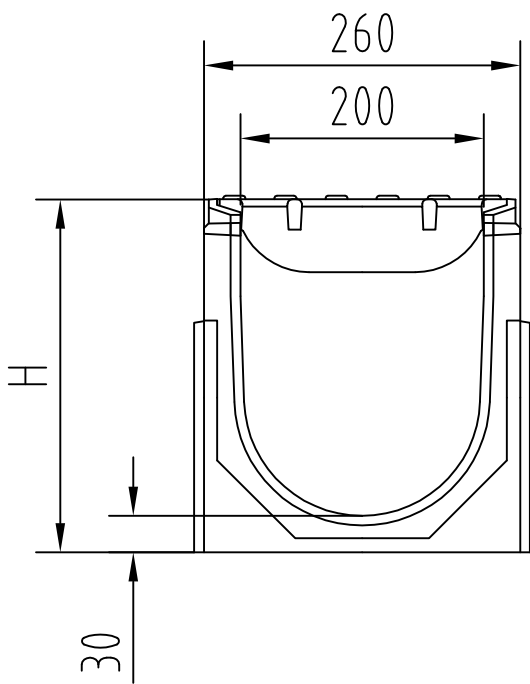


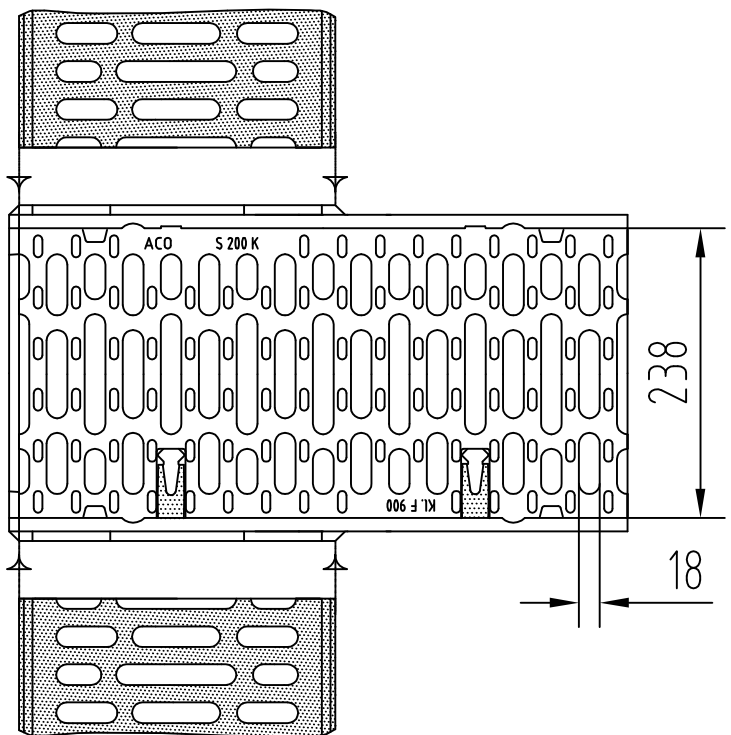
	H (mm)
Typ 0.0	290
Typ 10.0	340
Typ 20.0	390



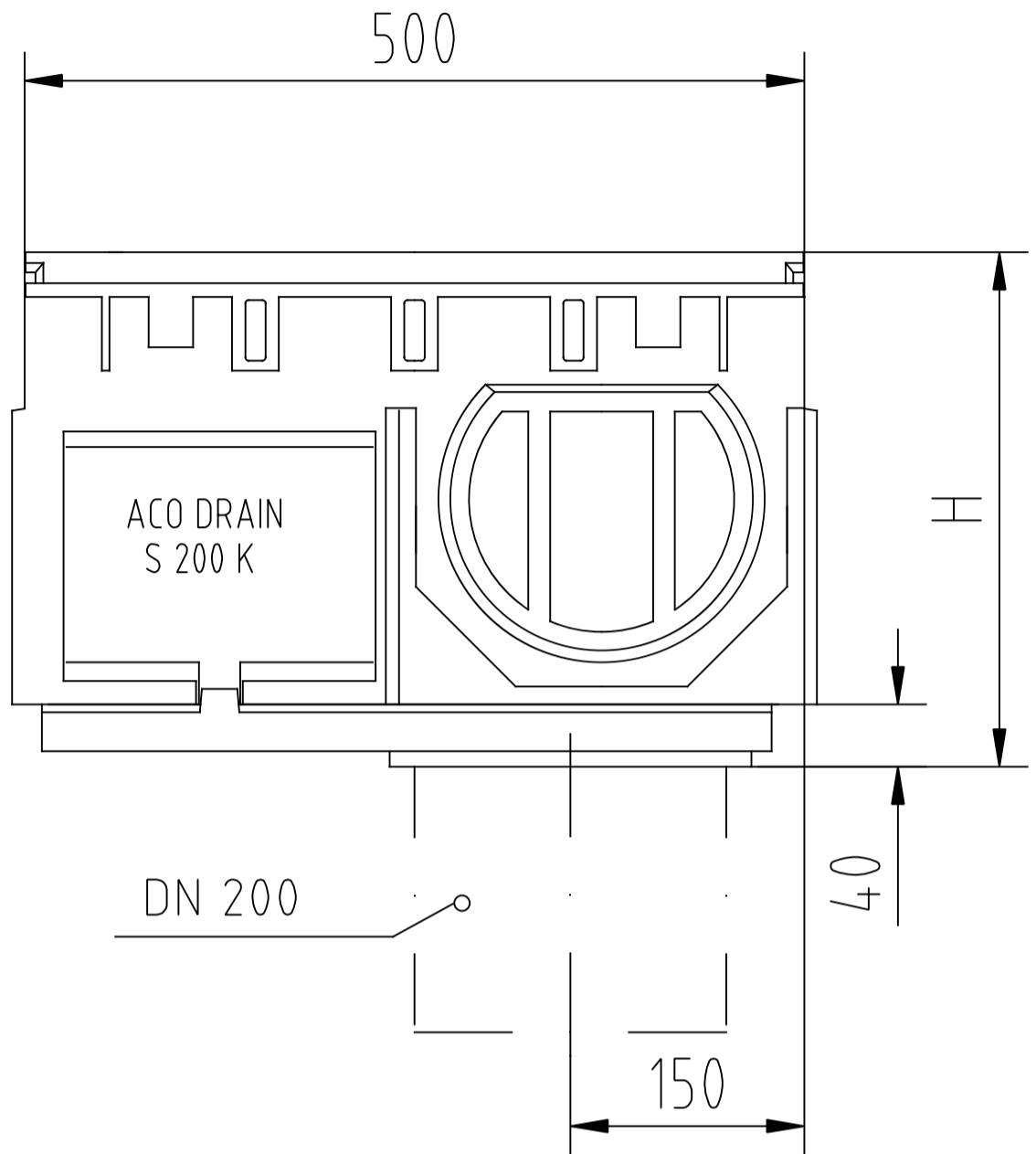
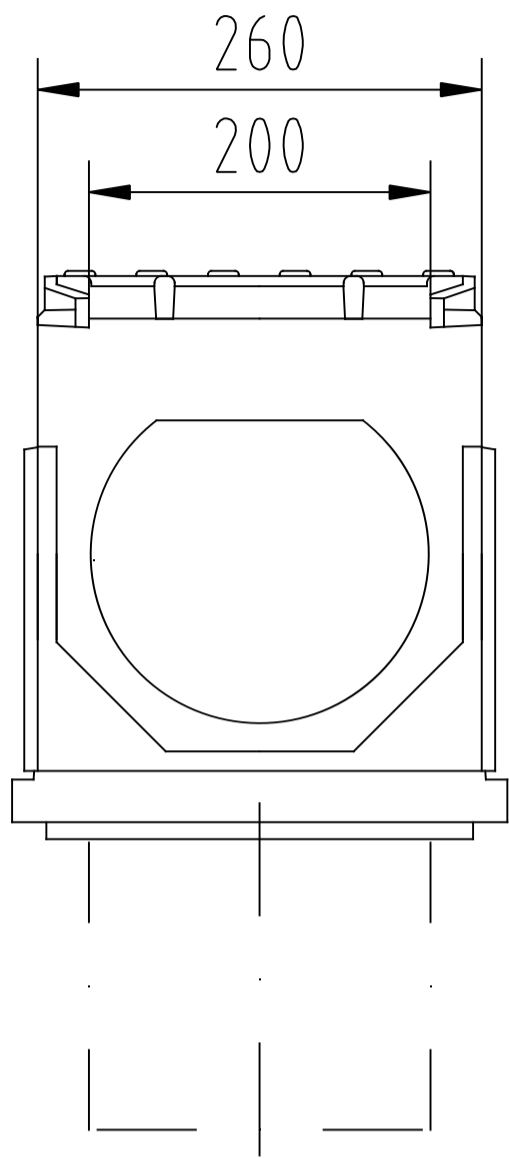
ACO DRAIN Rinne S 200 K mit Gussrost
Art.-Nr. 00571 - 00573



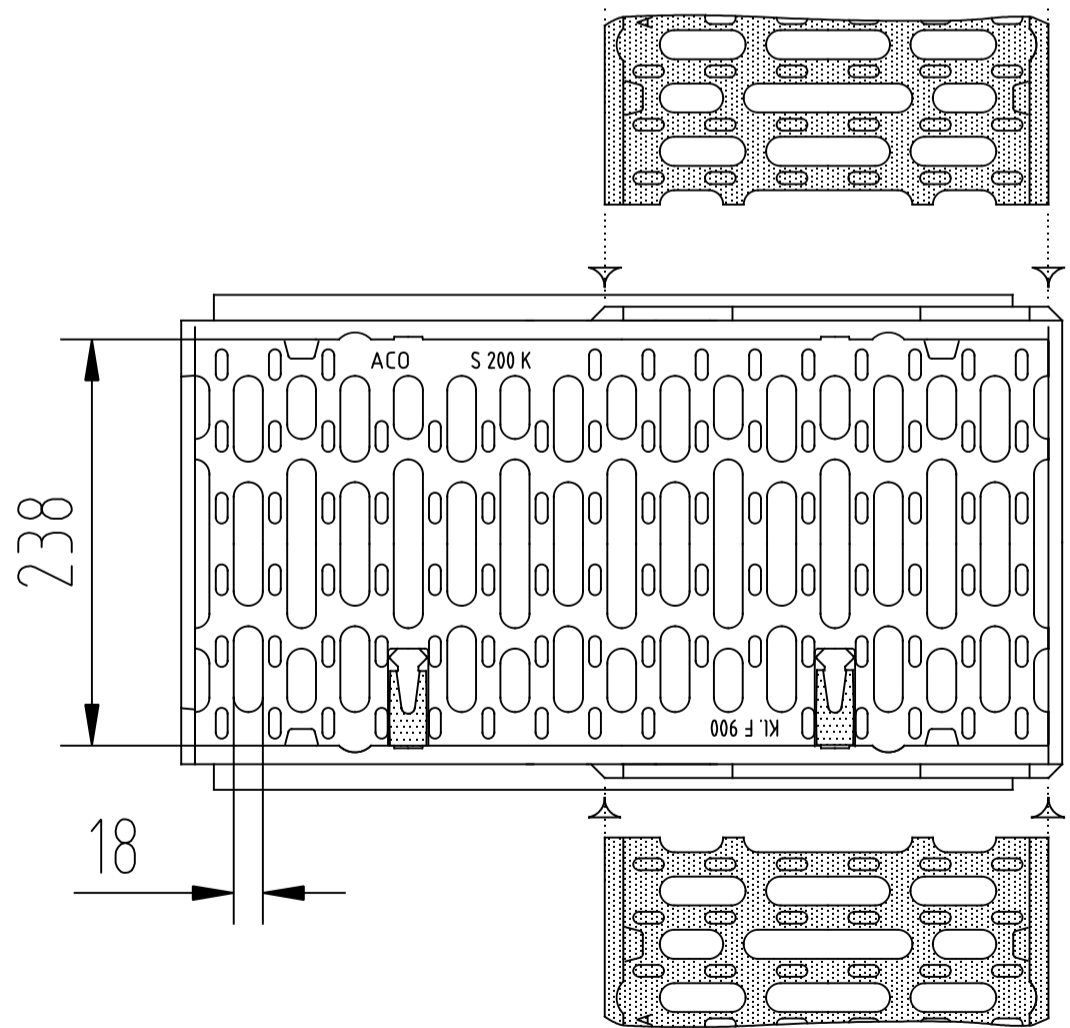
	H (mm)
Typ 0.1	290
Typ 10.1	340
Typ 20.1	390



ACO DRAIN Rinne S 200 K, 0,5m
 Art.-Nr. 00574 - 00576

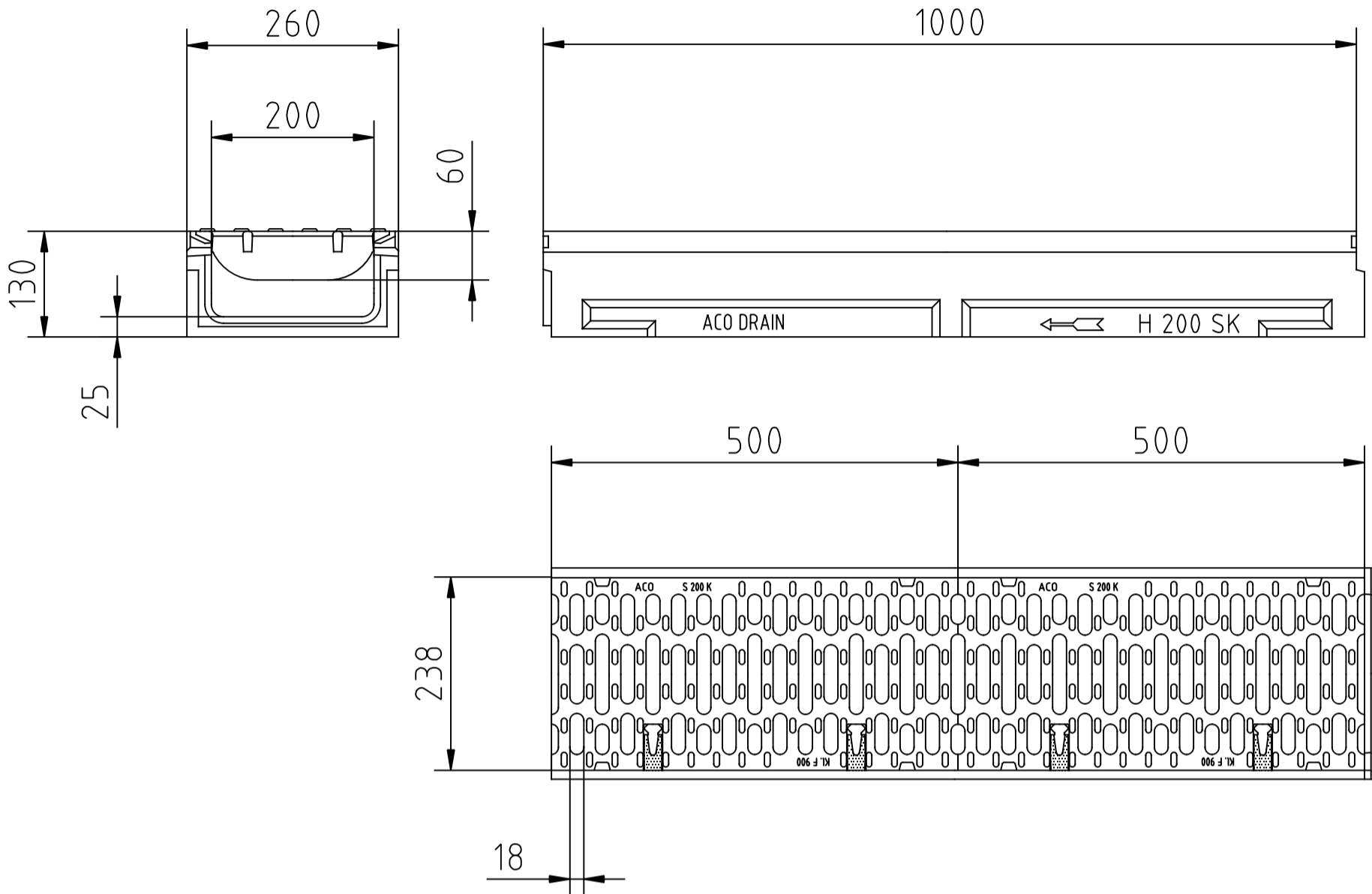


	H (mm)
Typ 0.2/1	330
Typ 10.2/1	380
Typ 20.2/1	430

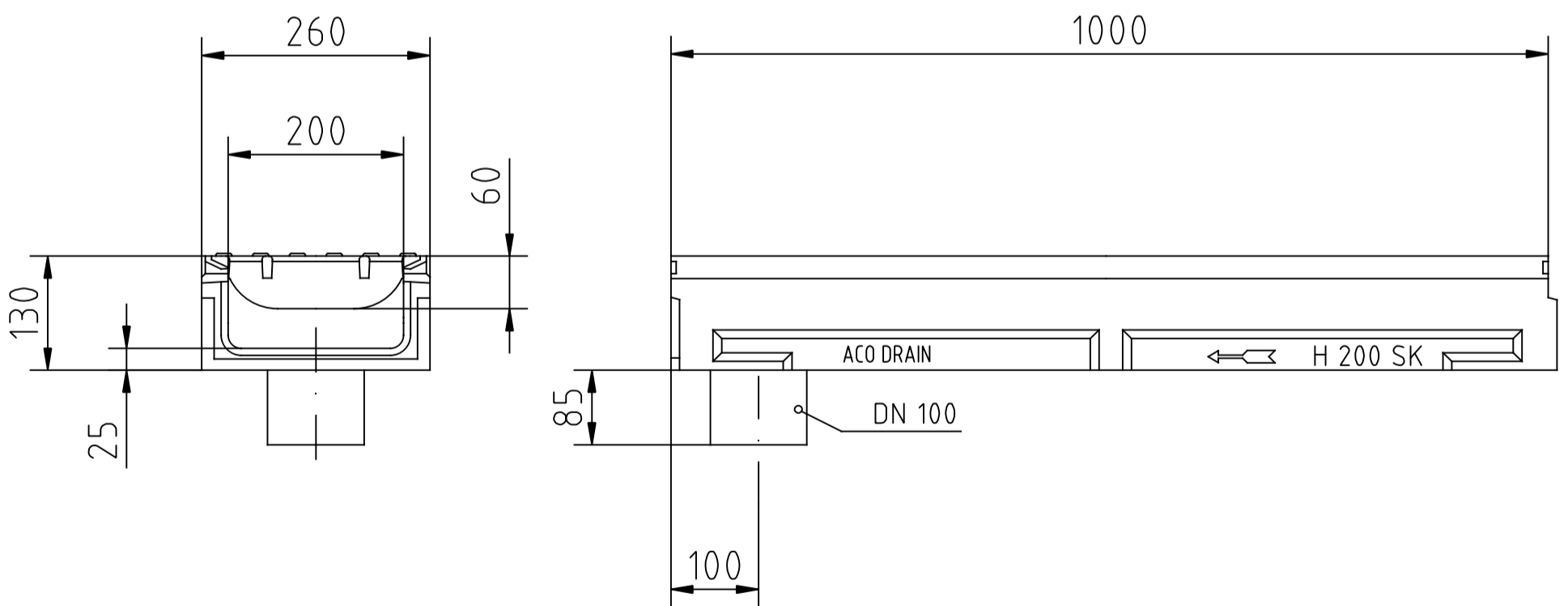


ACO DRAIN Rinne S 200 K 0.2/1
mit Gussrost, Art.-Nr. 02981, 02983, 02985

ohne Stutzen Art.-Nr. 08013



mit Stutzen DN 100 Art.-Nr. 10036



Benennung:
ACO DRAIN S 200 K Flachrinne H=13 cm
1,0 m ohne / mit Stutzen DN 100

Art.-Nr. 08013,10036

	Datum	Name
Gez.	26.08.1998	Reimers
Upd.	15.09.2009	debeling
Norm		



ACO Tiefbau

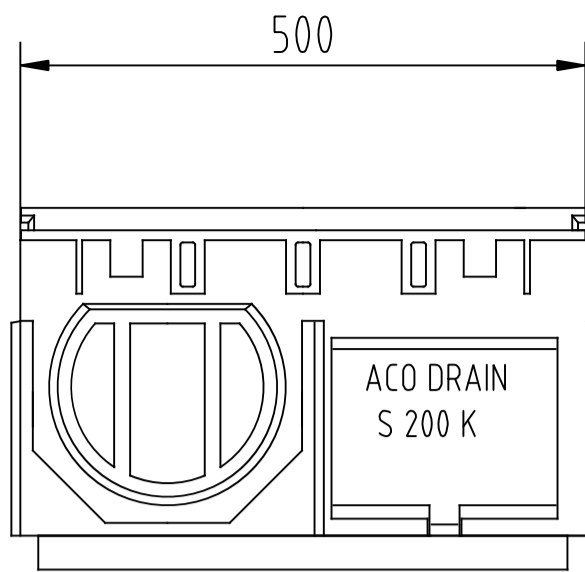
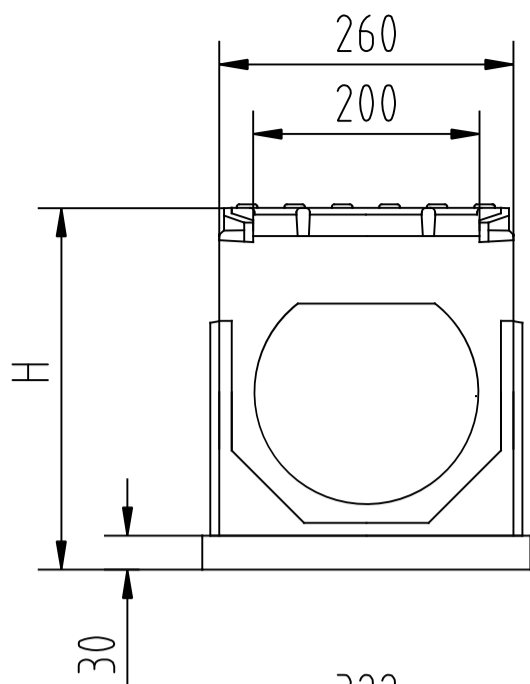
ACO Tiefbau Vertrieb GmbH
24755 Rendsburg, Postfach 320
Tel. 04331 / 354-500
FAX 04331 / 354-358
www.aco-tiefbau.de

Zeichnung-Nr.
G1-M01-845-3-N1

Technische Änderungen vorbehalten

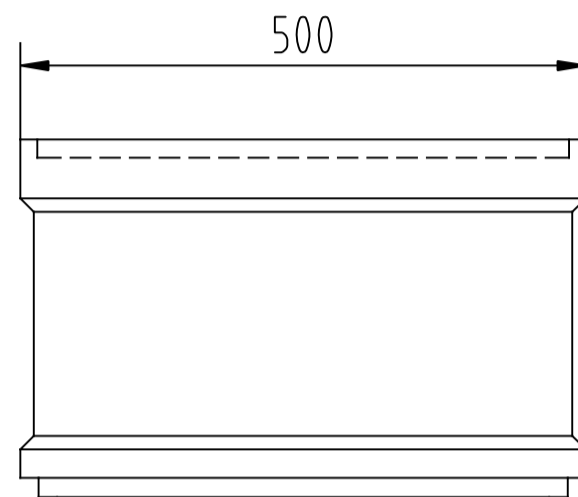
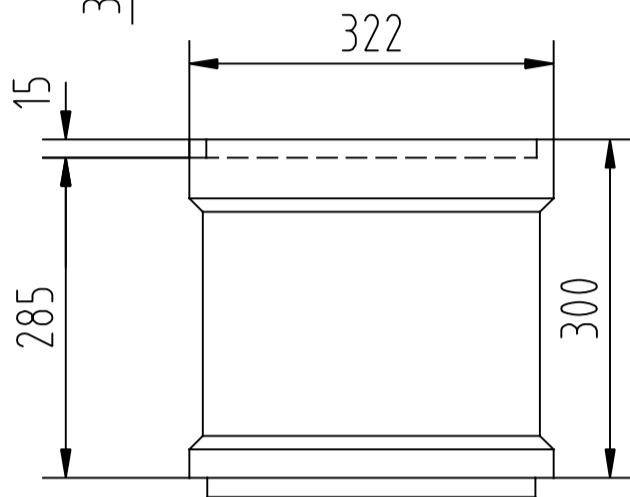
Schutzvermerk gemäß DIN 34

Ers. für:

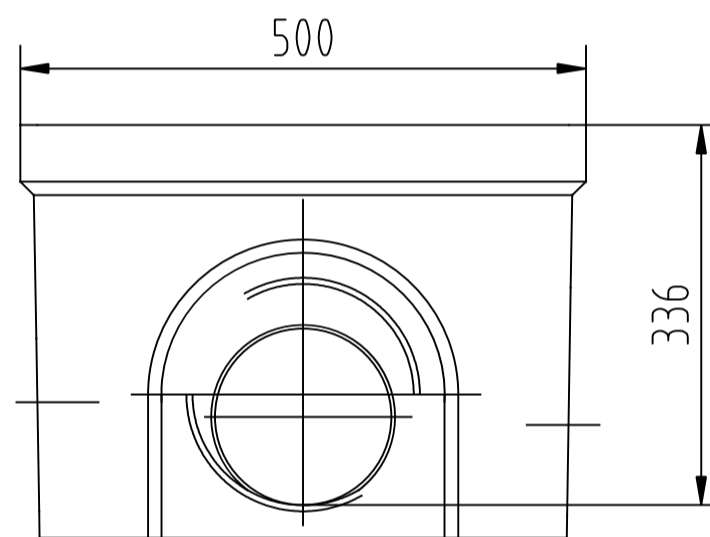
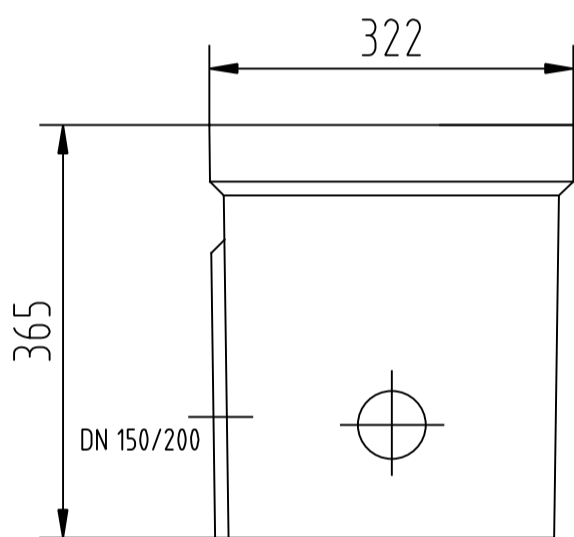


Oberteil

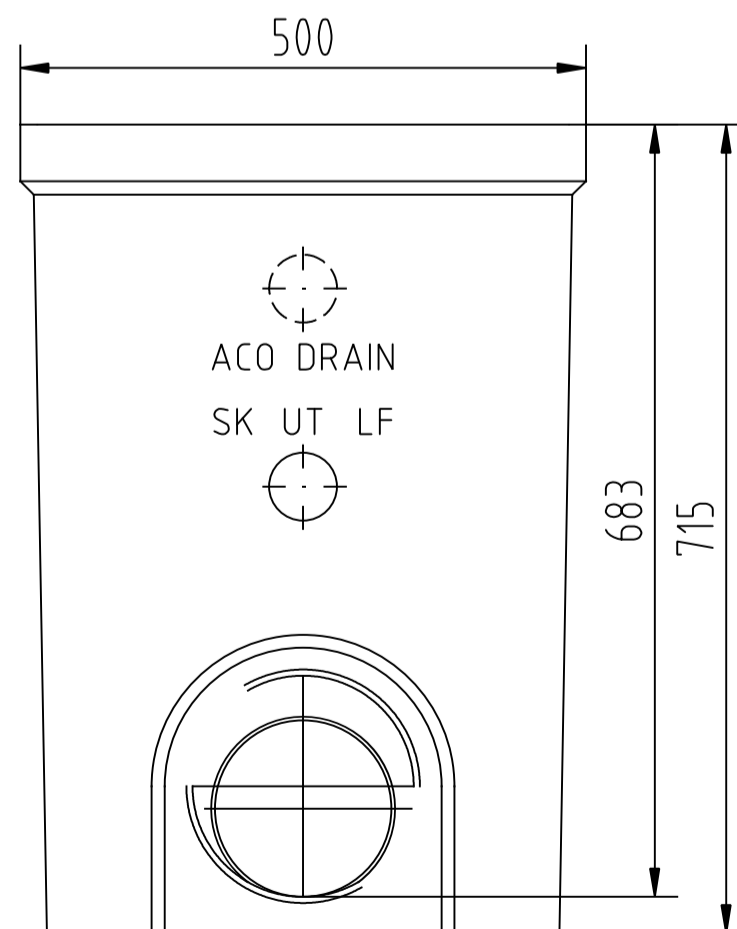
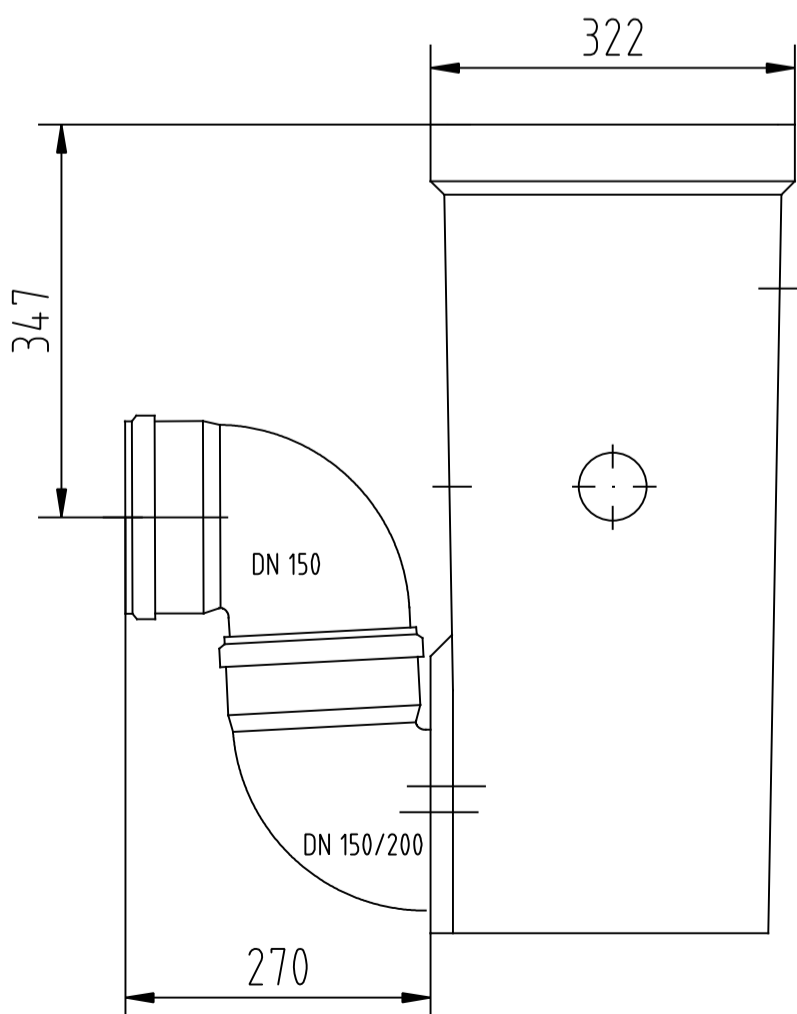
H (mm)	Art.-Nr.
320	02987
370	02988
420	02989



Zwischenteil
Art.-Nr. 01697



Unterteil Kurzform
Art.-Nr. 01614/DN150
Art.-Nr. 06190/DN200



Unterteil Langform
Art.-Nr. 03217/DN150
Art.-Nr. 08565/DN200